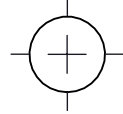
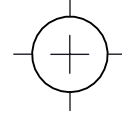


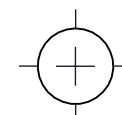
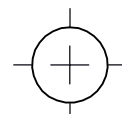
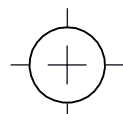
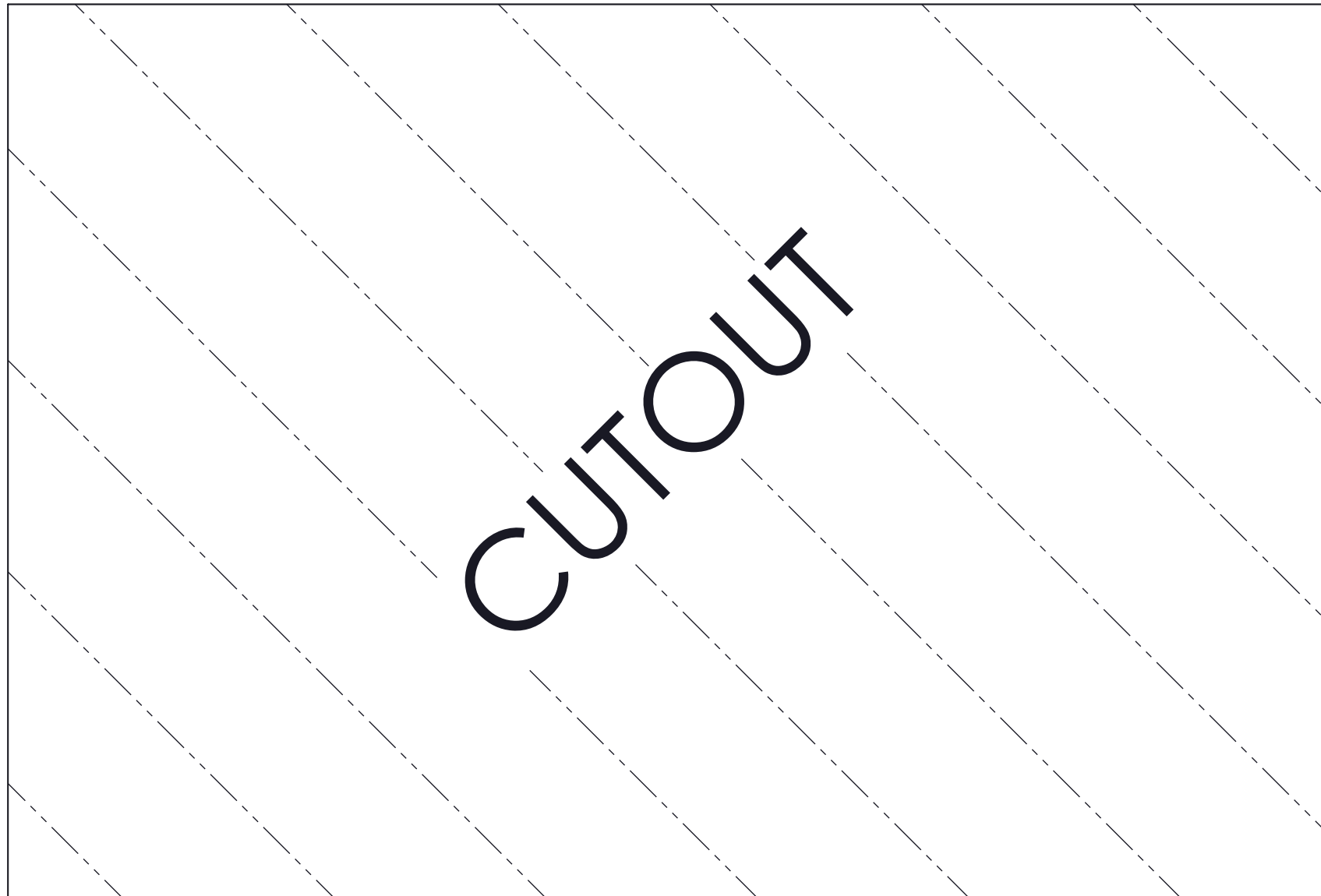
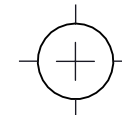
ISO STANDARD REVISION LABEL		ANSI STANDARD REVISION LABEL		Allgemeintoleranzen/ Tolerance		Maßstab/ Scale		Teile-Nr. Part-No.	
				ISO 2768-m		1:3		885407005	
Bemassung/Dimension: mm [inch]						Halbzeug/ Semifi. product: Werkstoff/ Material:			
				Datum/Date		Name/Name		Benennung/Description:	
				Bearbeiter / Drawn by		19 Nov 2024		PIC_EK	
				Geprüft / Checked by		14 Jan 2025		C. Wilson	
				Geändert / Modified by		13 Jan 2025		E. Kiamos	
				 Pfannenberg ELECTRO-TECHNOLOGY FOR INDUSTRY		885407005		Blatt/Blätter page/pages	
01_		CN81285						13 Jan 2025	
Zust./ state		Änderung/change No.		Datum/date		Name		Urspr./source:	
								Ers.f./substituted f.:	
								Ers.d./replaced by:	
Schutzvermerk nach DIN 34 und ISO/DIS 16016: "Weitergabe und Vervielfältigung dieses Dokuments, Verwertung und Mitteilung seines Inhalts sind verboten, soweit nicht ausdrücklich gestattet. Zuwiderhandlungen verpflichten zu Schadensersatz. Alle Rechte für den Fall der Patent-, Gebrauchsmuster- oder Geschmacksmustereintragung vorbehalten."				Copyright reserved of DIN 34 and ISO/DIS 16016: "The copying, distribution and utilization of this document as well as the communication for its contents to others without expressed authorization is prohibited. Offenders will be held liable for the payment of damages. All rights reserved in the event of the grant of a patent, utility model or ornamental design registration."					



External PF33000 SL Cutout
Part No. 885407005



Rev 01-



DISPLAYED AT 1:1 SCALE
SHEET SIZE: 400 x 300mm [15.75 x 11.81"]

1:1 SCALE REFERENCE
MEASURE TO CONFIRM SIZE

